

CPI/NBS classification conference



London
3 February 2012



- 09:00 Registration and coffee
- 09:30 Introduction to CPI (Sarah Delany)
- 10:00 ISO 12006-2 (John Gelder)
- 10:15 Problems with Uniclass (John Gelder)
- 10:30 Coffee
- 10:45 Solutions for Uniclass (John Gelder)
- 11:15 Replacing CAWS (John Gelder)
- 11:45 Work section structure (John Gelder)
- 12:00 Semantic web project (Stuart Chalmers)
- 12:30 Finish



Construction Project Information (CPI)

Sarah Delany

CPI committee secretary

NBS technical author



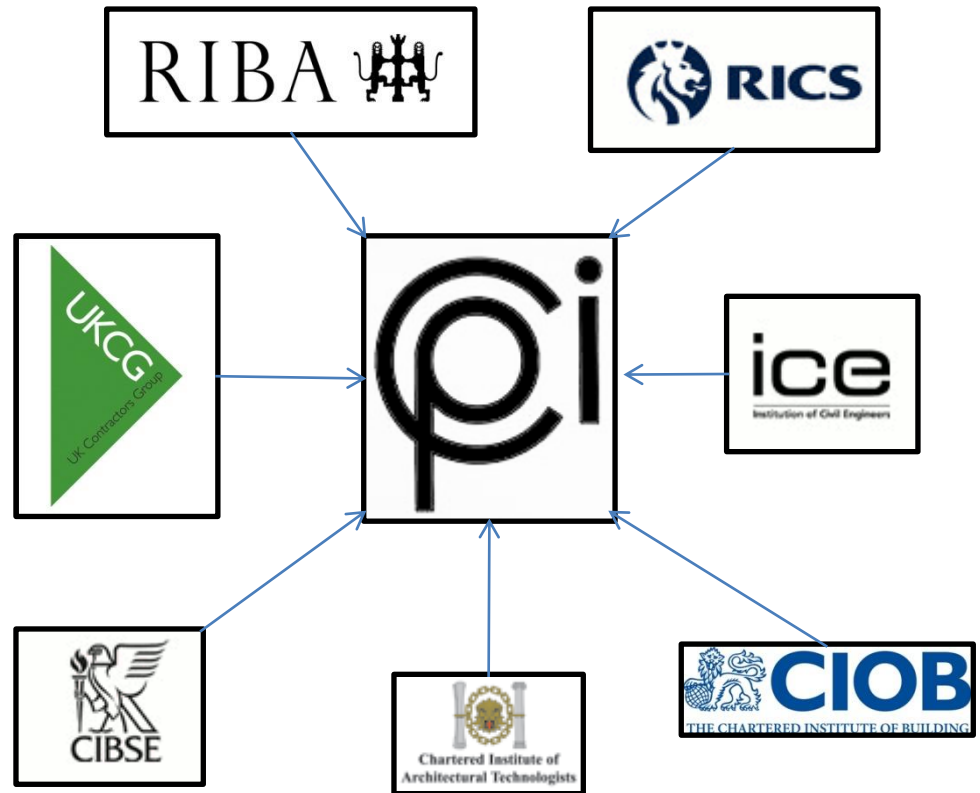
CPI

- **CPI = ‘Construction Project Information’**
- Best practice guidance on any information relating to construction projects:
 - Content
 - Form
 - Preparation
- Ensures consistent dissemination throughout UK construction industry.



CPI committee

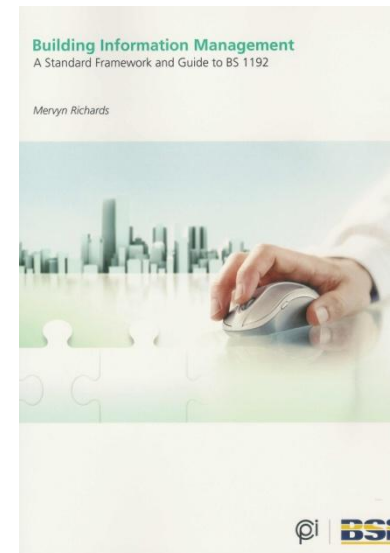
- Representatives of the major industry institutions
- Ensures the guidance provided has a solid industry foundation





Publications

- Building information management: A standard framework and guide to BS 1192.
 - A joint publication with BSI in 2010.



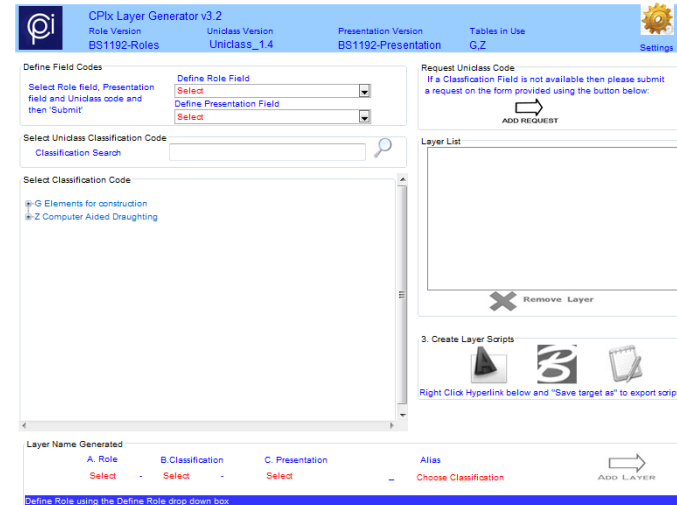


Publications

- Common Arrangement of Work Sections (CAWS)
 - First published in 1987 and revised in 1997
 - Revised on the CPI website in 2005
 - Table J of Uniclass
- Uniclass
 - First published in 1997
 - Tables G and H combined and listed on the website in 2011. Version in use by Crossrail

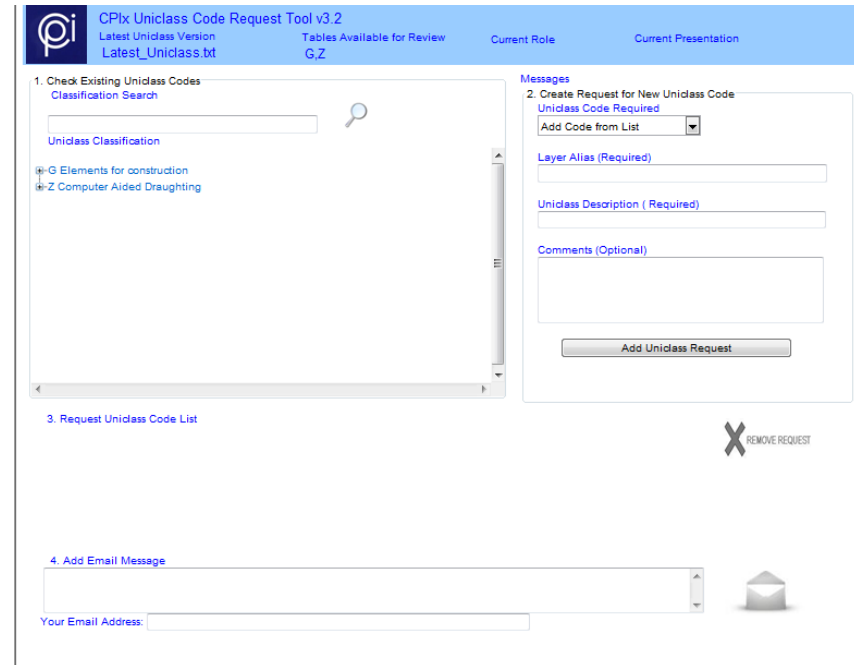
CPIx On line tools

- Uniclass layer generator
 - Generate a file for importing into modelling and CAD software
 - Define layer and object classification



CPIx On line tools

- Uniclass request tool
 - Formal method for requesting code for new classification
 - New code added to master: everyone uses the same classification



The screenshot shows the 'CPIx Uniclass Code Request Tool v3.2' interface. The header includes the CPI logo, the tool name, and user information: 'Latest Uniclass Version Latest_Uniclass.bt', 'Tables Available for Review G.Z', 'Current Role', and 'Current Presentation'. The main content is divided into three sections:

- 1. Check Existing Uniclass Codes**: A 'Classification Search' field with a magnifying glass icon. Below it is a list of 'Uniclass Classification' items: 'G Elements for construction' and 'Z Computer Aided Draughting'.
- 2. Create Request for New Uniclass Code**: A form with the following fields:
 - 'Uniclass Code Required' with a dropdown menu showing 'Add Code from List'.
 - 'Layer Alias (Required)'
 - 'Uniclass Description (Required)'
 - 'Comments (Optional)'A 'Add Uniclass Request' button is at the bottom of this section.
- 3. Request Uniclass Code List**: A section with a red 'X' icon and the text 'REMOVE REQUEST'.

At the bottom, there is a section for '4. Add Email Message' with a text area and a 'Your Email Address:' field.



CPIx Protocol

- Construction Project Information (E)xchange
- Work in progress
- Updated version of the PIX protocol
- Client tool for managing project teams



Deliverables strategy

- CPI Strategy Document
- Construction Industry Confederation (CIC) project



Unifying Uniclass – Why?

It's all to do with BIM



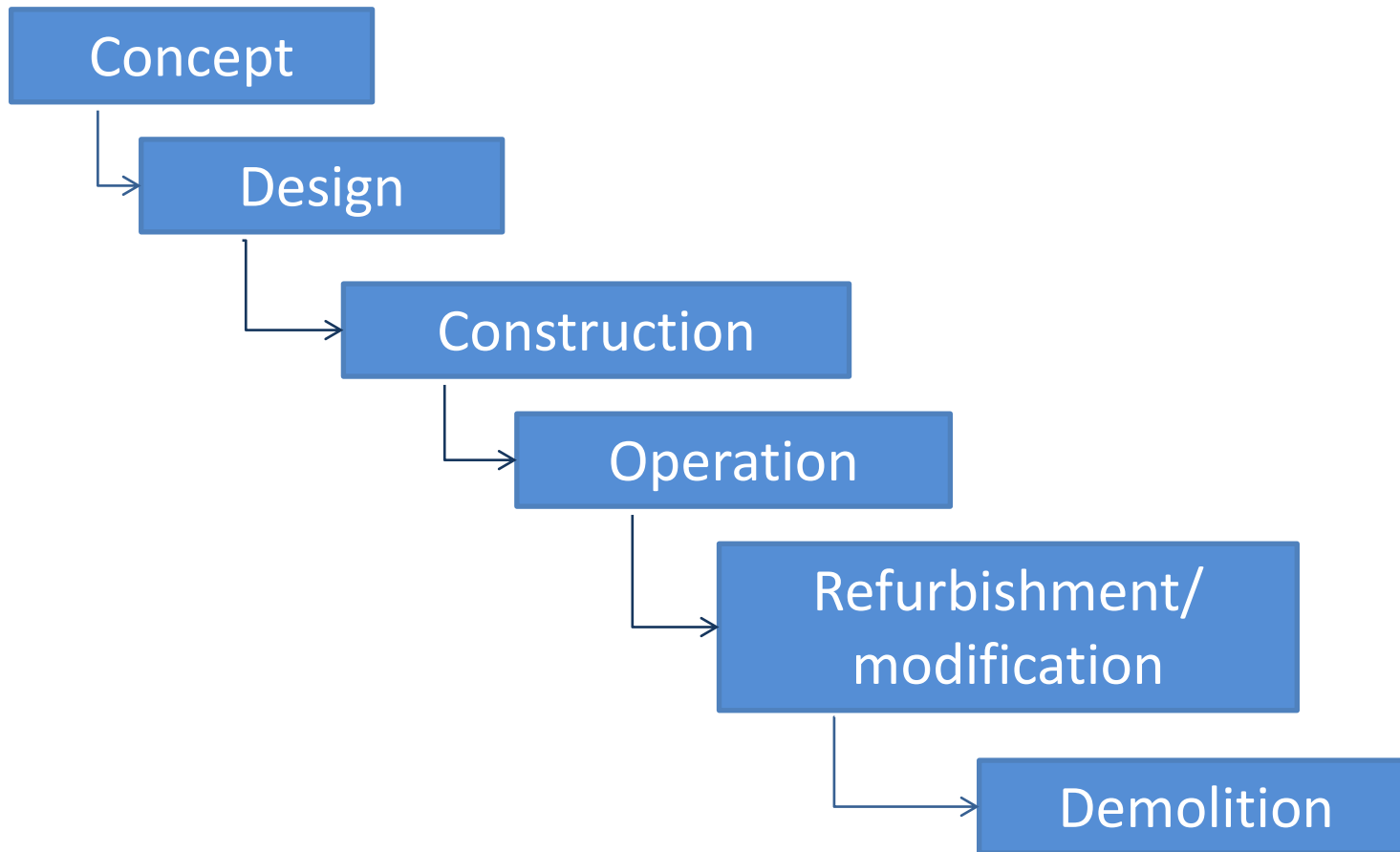
Building Information Modelling (BIM)

Fundamental principle of BIM:

“Adoption of a procedure for sharing information”

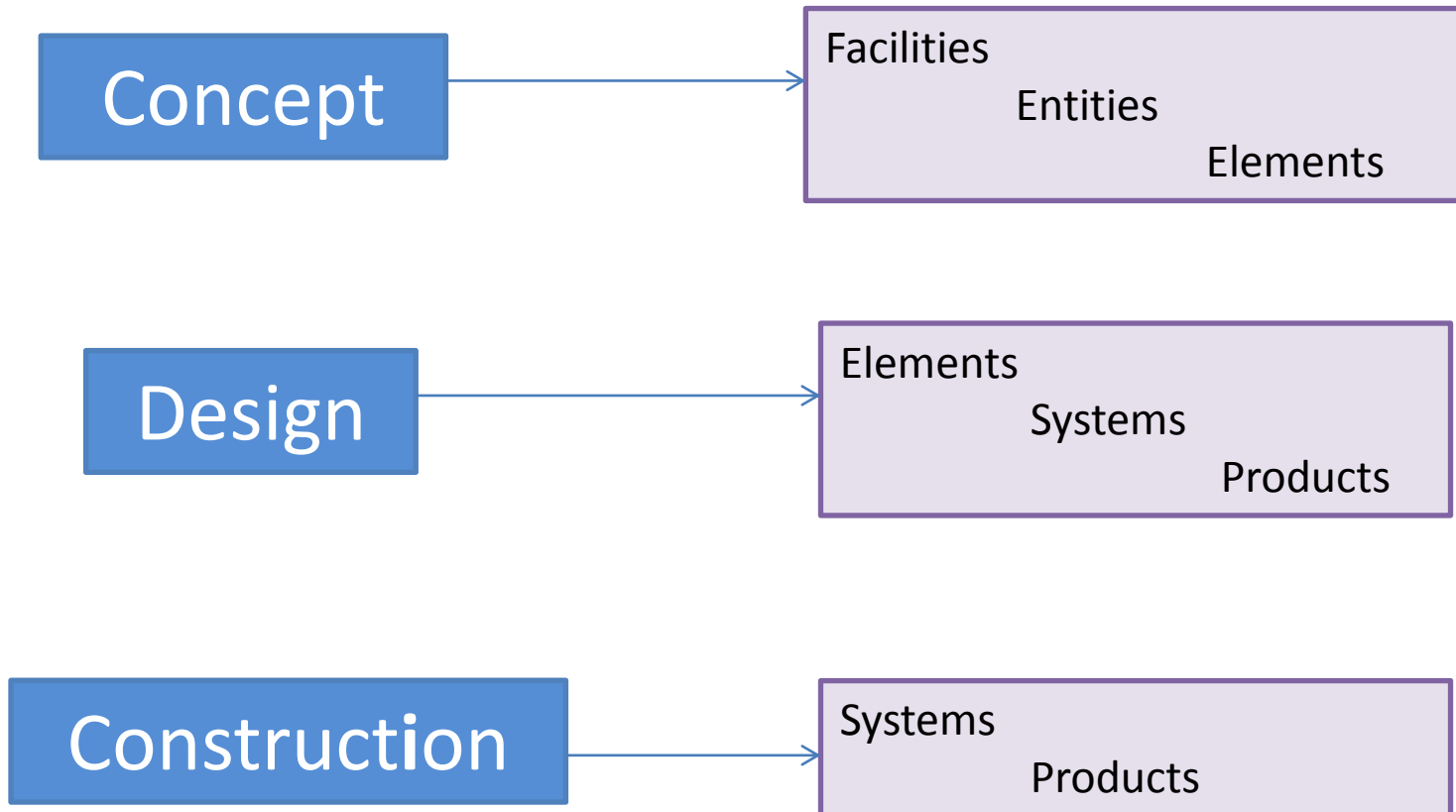


Construction life cycle



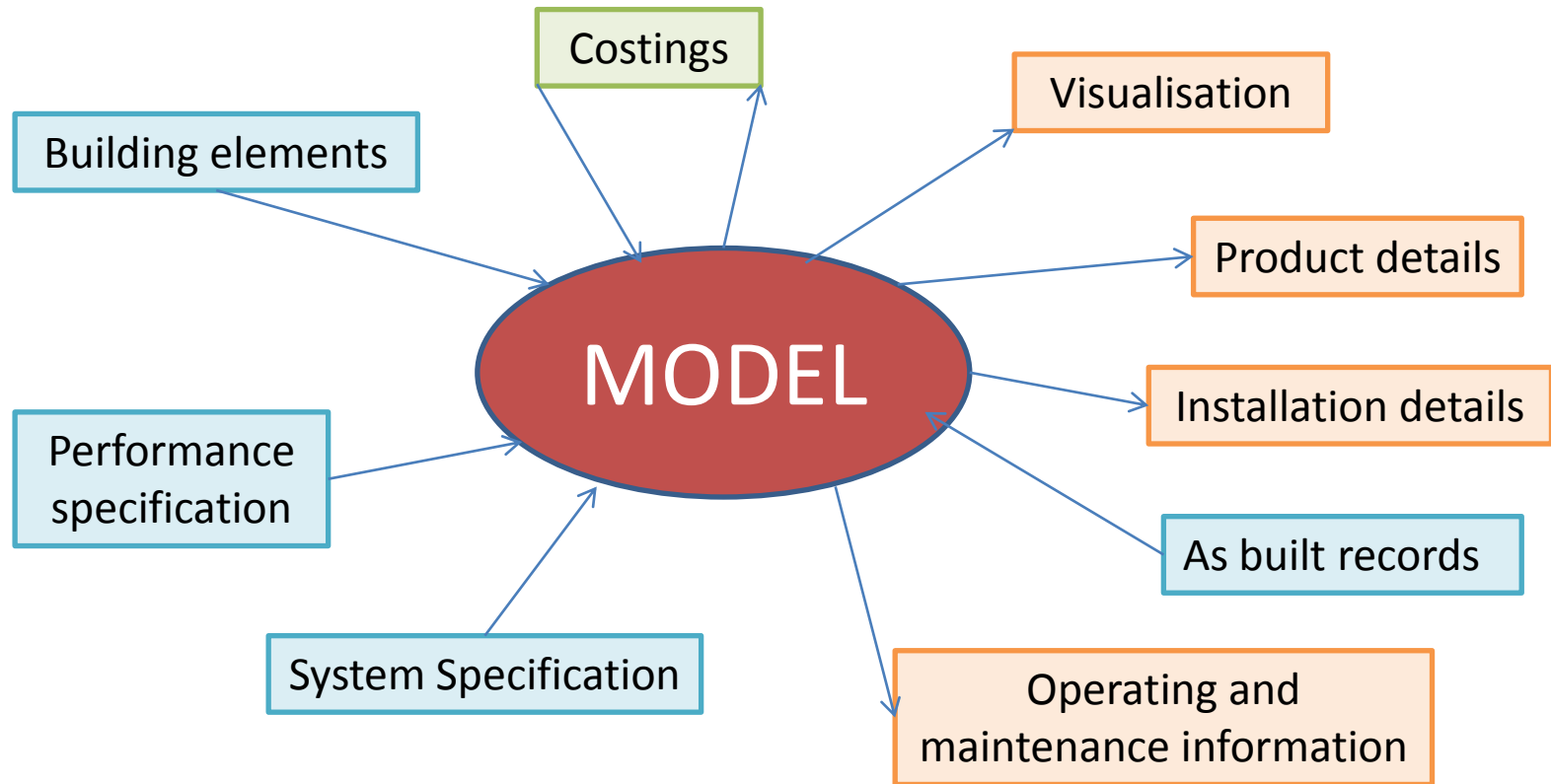


Concept to Construction





Information sharing





Current Uniclass

- Tables used by different disciplines for different functions.
- Librarians
 - Table D to define Facilities.
 - Table E to define Entities.
 - Table F to define Spaces.
 - Table L to define Products.



Current Uniclass

- CAD and modelling software users
 - Table G, Elements.
- Specification
 - Table J, Work sections.
- Costing
 - Table D, Facilities.
 - Table E, Entities.
 - Table F, Spaces.
 - Table G, Elements.
 - Table J, Work sections.
 - Table L, Products.



Unified Uniclass

- New set of tables.
- Linked from one to another.
- Using the same terminology.
- Electronic not printed.
- Dynamic.



Managing the change

- Ontology project.
- Mapping.